

long since harnessed their traditional skills to the rapid industrialisation of their rich country. They mine coal and

for a new 10-million market in its own right has been born in Eastern Nigeria, which also provides the economic nucleus for

Over the past few years, the Government has been making a major effort to develop the country's resources and to improve the standard of living. This effort is being carried out through a number of schemes, including the construction of roads, bridges, and railways, and the establishment of educational and health services.

The Government is also making a major effort to improve the country's economy. This effort is being carried out through a number of schemes, including the establishment of new industries, the expansion of existing industries, and the promotion of agriculture and commerce.

The Government is also making a major effort to improve the country's infrastructure. This effort is being carried out through a number of schemes, including the construction of roads, bridges, and railways, and the establishment of educational and health services.

The Government is also making a major effort to improve the country's social services. This effort is being carried out through a number of schemes, including the establishment of new schools, hospitals, and social welfare services.

G.B.O.
THROUGHOUT WEST AFRICA
ASSOCIATED COMPANIES

G. B. OLLIVANT LTD.
The Niger and Benue river systems are the lifeblood of the country. The Government is making a major effort to improve these systems through a number of schemes, including the construction of dams, bridges, and railways, and the establishment of educational and health services.

The Government is also making a major effort to improve the country's infrastructure. This effort is being carried out through a number of schemes, including the construction of roads, bridges, and railways, and the establishment of educational and health services.

Water - the market

businesses to develop and flourish. The Government is making a major effort to improve these systems through a number of schemes, including the construction of dams, bridges, and railways, and the establishment of educational and health services.

For the businessman the importance of the Niger and Benue river systems is obvious. These systems provide the country with a major source of power and transport. The Government is making a major effort to improve these systems through a number of schemes, including the construction of dams, bridges, and railways, and the establishment of educational and health services.

The Government is also making a major effort to improve the country's infrastructure. This effort is being carried out through a number of schemes, including the construction of roads, bridges, and railways, and the establishment of educational and health services.

Water - the market

businesses to develop and flourish. The Government is making a major effort to improve these systems through a number of schemes, including the construction of dams, bridges, and railways, and the establishment of educational and health services.

For the businessman the importance of the Niger and Benue river systems is obvious. These systems provide the country with a major source of power and transport. The Government is making a major effort to improve these systems through a number of schemes, including the construction of dams, bridges, and railways, and the establishment of educational and health services.

The Government is also making a major effort to improve the country's infrastructure. This effort is being carried out through a number of schemes, including the construction of roads, bridges, and railways, and the establishment of educational and health services.

businesses to develop and flourish. The Government is making a major effort to improve these systems through a number of schemes, including the construction of dams, bridges, and railways, and the establishment of educational and health services.

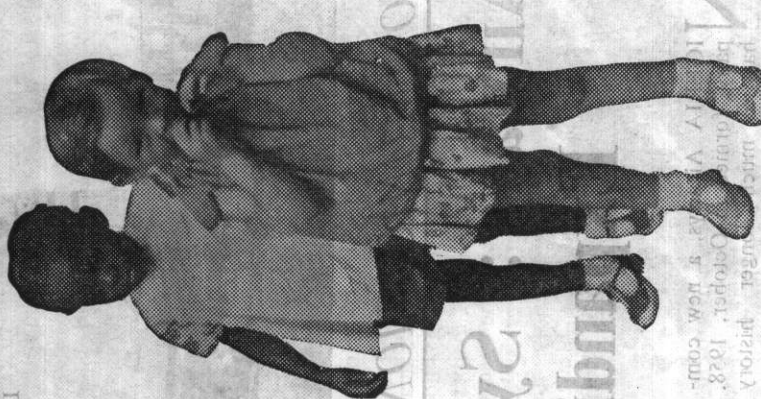
For the businessman the importance of the Niger and Benue river systems is obvious. These systems provide the country with a major source of power and transport. The Government is making a major effort to improve these systems through a number of schemes, including the construction of dams, bridges, and railways, and the establishment of educational and health services.

The Government is also making a major effort to improve the country's infrastructure. This effort is being carried out through a number of schemes, including the construction of roads, bridges, and railways, and the establishment of educational and health services.

businesses to develop and flourish. The Government is making a major effort to improve these systems through a number of schemes, including the construction of dams, bridges, and railways, and the establishment of educational and health services.

businesses to develop and flourish. The Government is making a major effort to improve these systems through a number of schemes, including the construction of dams, bridges, and railways, and the establishment of educational and health services.

businesses to develop and flourish. The Government is making a major effort to improve these systems through a number of schemes, including the construction of dams, bridges, and railways, and the establishment of educational and health services.



Focal Point of Thirty Shipping Lines