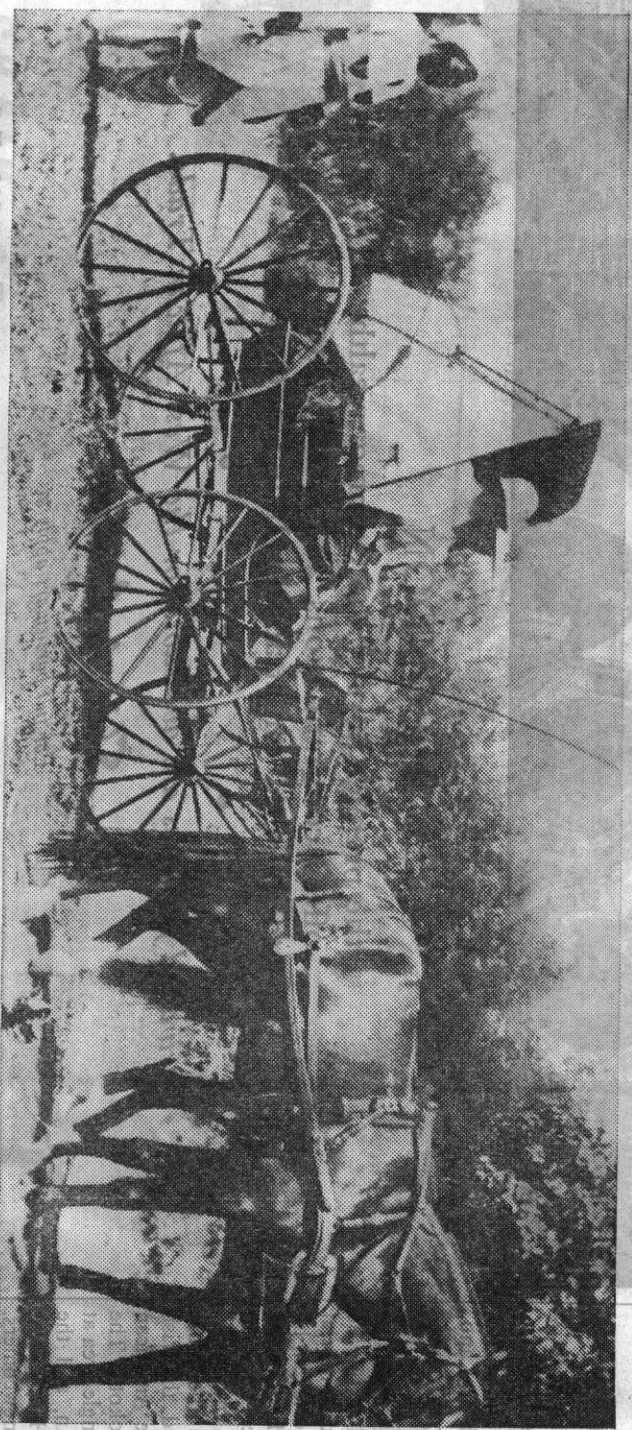


A BIG REGION

**STABLE
TOLERANT
TRADITIONAL
FORWARD LOOKING** | **MANPOWER
ELBOW-ROOM
RESOURCES
FACILITIES**

282,000 SQUARE MILES—18½ MILLION PEOPLE



THE GENERAL MANAGERS, SOCIETY OF LONDON, LONDON, E.C. 4

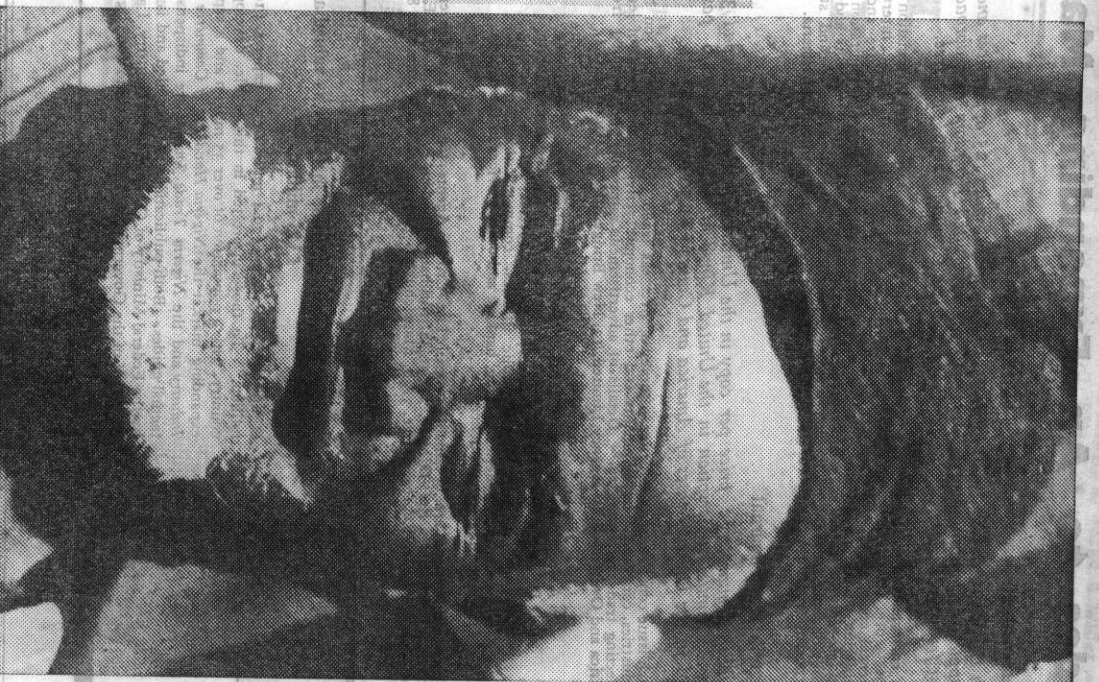
**NORTHERN
NIGERIA
IS PROUD
OF ITS
PROGRESS**

& FAM. DIV.

**PAYS TRIBUTE TO PAST
AND PRESENT AID WHILE
PRESSING ON TO GREATER
ACHIEVEMENT IN PARTNER-
SHIP WITH THOSE OFFERING
SKILLS WITH SINCERITY**

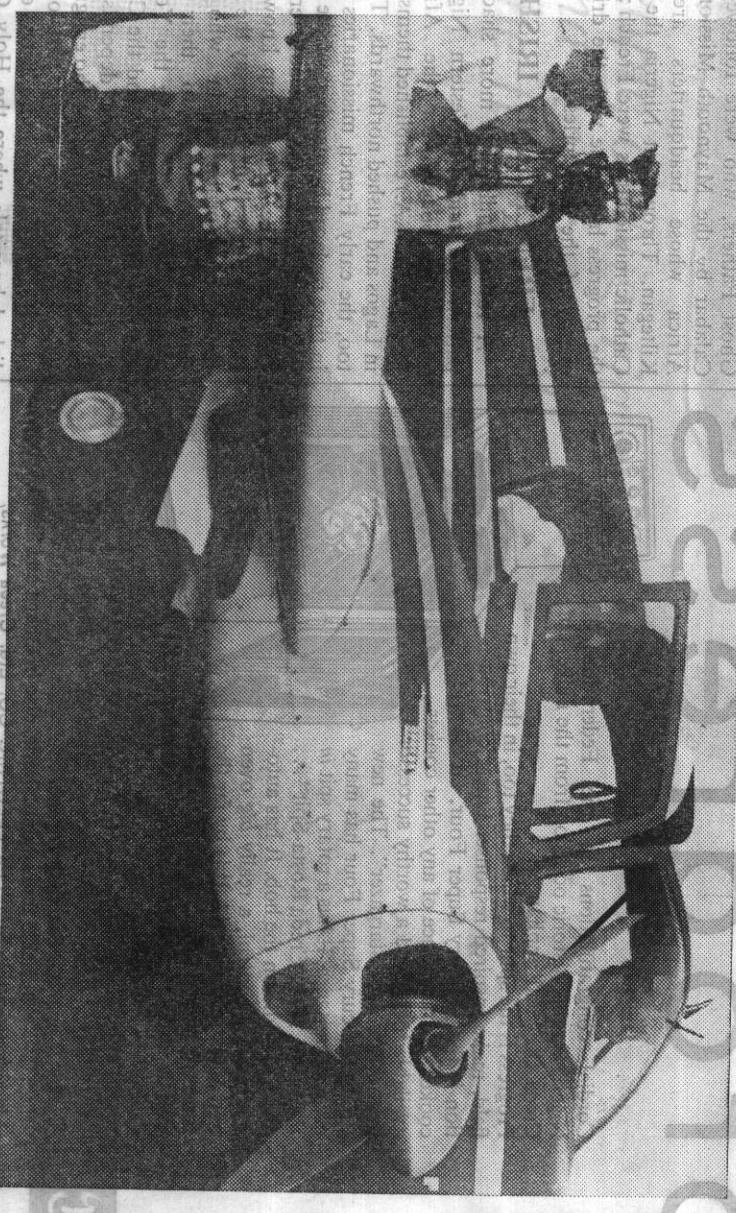


**YOUNG AND
OLD HAVE
GOOD CAUSE
TO SING
AND SMILE...**



The horse is still very much in the picture in Northern Nigeria—but not the “four-wheeler”: Kano Airport (top left) is a great air junction, and the Northern Com-munications Flight (the Premier, Ahaji Sir Ahmadu Bello, is about to embark in one of its Piper Apaches, below) speeds the work of busy Ministers and officials.

Nigeria has offices in London, New York and Washington—in Northern Nigeria inquiries should be made to the Ministry of Internal Affairs, Kaduna



British Address: MEMBER OF COMMERCE HOUSE, 75 HARBOURNE ROAD, BRISTOL, ENGLAND
BIRMINGHAM 5 Telex No. 3344 Telephone: EDGEBROOK 343